

# BUS Project Mobile Application



Erasmus+



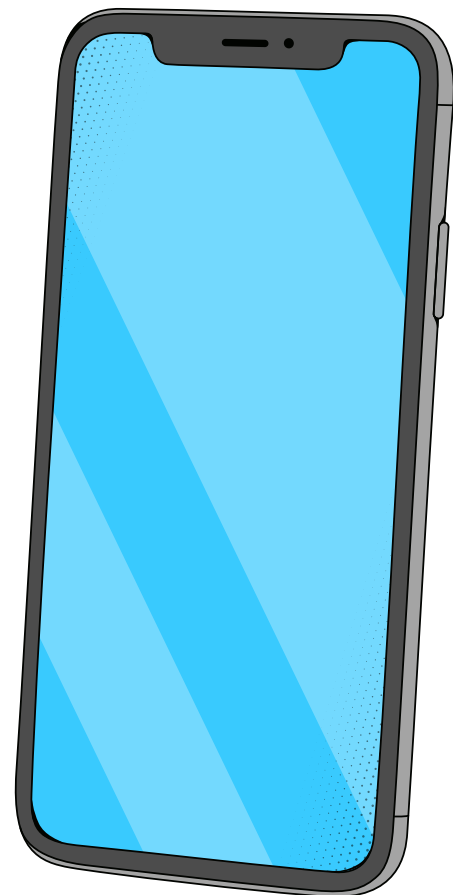
# Technical Specifications And Description

**Today, the use of smartphones and tablets has become more popular and has begun to replace the use of computers.**

The backend side of this project's platform is written in PHP, which is completely suitable for use on mobile devices. The application is created using the Laravel framework, which includes the latest in assistive technologies. On the frontend, a simple, understandable and a user-friendly interface was preferred. The feedback from the users will be taken into account when further developing the application. MySQL has been used on the database side, and all security measures such as firewall, antivirus software and cloud IP have been used to protect both the database and personal data. It has imposed limitations on the number, size and resolution of uploaded images due to reasons such as getting faster results and limited storage space.

Both the web and mobile sides of the platform were developed on local servers and the first tests were carried out by the project team on them. Then it was transferred to the live server and user tests were applied. All of the outputs obtained during the project were published as version 1. Turkish Youth Clubs Confederation will ensure the continuation of the platform updates after the end of the project.

The application stands out in its field by bringing 4 different users together, first time ever. Applications developed for similar purposes are generally single-user and based on user comments. For example; an application developed in the UK for wheelchair users, is based only on sharing comments between people in similar situations. It cannot provide a bilateral interaction area without being dependent on a control mechanism.



We have mentioned some of the environmental problems faced by disabled people in participating in active life with sports are caused by the facilities (premises – equipment) and trainers. Unfortunately, today, there is no central database that contains the information of the premises with sports facilities for the disabled. This issue has been put on the agenda in the new strategy of the European Union for the disabled. Eliminating the lack of information and creating a strong communication network will encourage individuals with disabilities to participate in sports. In this way, there will be a positive return to the society in the socio-cultural sense. Building United Society (BUS) provides practical solutions to all the problems in this field.

Users in the Application;

- 1.Type: People with Disabilities and Their Families
- 2.Type: Facility Owners and Managers
- 3.Type: Official Institutions and Organizations (Disabled Associations, Federations, Confederations, Roof Organizations)
- 4.Type: Sponsors

The application covers all actors who need to cooperate in order for people with disabilities to adopt an active lifestyle and it makes their communication much more efficient.

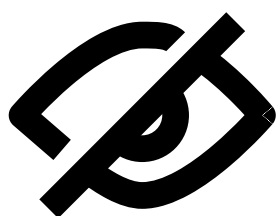
### **Type 1: People with Disabilities and Their Families**

Disabled individuals and their families can see the nearest gym and parks on the map. They can have information about the level of relevance according to the type of disability, and they can have information about the facility and facility trainers. By logging in, they can have the permission to rate and comment on facilities. Thus, by writing their comments and rating the facility publicly, they enable other users to have an idea about the facility.

Disabled individuals who become members can see the events created by the institution and report their participation status. They can share the event on various platforms so it is visible to more people in their circle.

### **Type 2: Facility Owners and Managers**

Property owners and managers sign up on our platform with membership basic information. As the next step, they answer the questions of the certification prepared within the scope of the project. Sports halls receive their rate cards according their suitability to different types of disabilities. These questions are designed to measure which facility is suitable for which type of disability. In the next step, the facility registers the information of its trainers into the system. It adds the experience of the trainers, whether they have worked with disabled people before, and their working hours to the system. Business profiles registered in the application can instantly share and update their business status. They can reply to incoming comments and ratings and make improvements at this stage.



### **Type 3: Official Institutions and Organizations**

User institutions (Associations with Disabilities, Federations and Confederations) can provide information about themselves and organize an event. They can provide detailed information about the activities, prices (if any), capacity, suitability to different type of disabilities, location, time, etc. via the application. Thus, institutions get the chance to advertise the event by announcing via the app, ensuring more participation. With this feature, they can reach their target audience.

Institutions can also register a list of needs in the events they will organize. These needs are communicated to the Sponsors, who are Type 4 users, by the system. Sponsors take part with their names in the activities and events they contribute

As an example;

A message from the Ankara Deaf Association is sent to the system saying that "The association needs an open-to-use activity area of 400 to 600 square meters for the organization of their oil painting exhibition (Silent Art) created by hearing impaired artists in 2022." A shopping mall or an Art Center in Ankara can respond to this message via the application and provide sponsorship.

As one of the benefits of the application, we aim to both contribute to social solidarity and increase corporate collaborations through sponsorship.

Institution users become authorized accounts when they meet the conditions determined by the application standards. In this way, they can confirm the report cards and status of the facilities in their region. They will have the permissions to control and change the status of a facility when there is a change. Thanks to this feature, both the local activity and the accuracy of the facility information in the application are officially confirmed.

### **Type 4: Sponsors**

Sponsor users are leading an innovation that will increase the importance of this project. The needs and requests for assistance communicated to the sponsor users through the project will both contribute to the social responsibility projects of the sponsoring organization and provide a suitable basis for the social existence of the disabled citizens.



# Sign-up

In order to login to the application, a user profile must first be opened.

On the user profile screen;

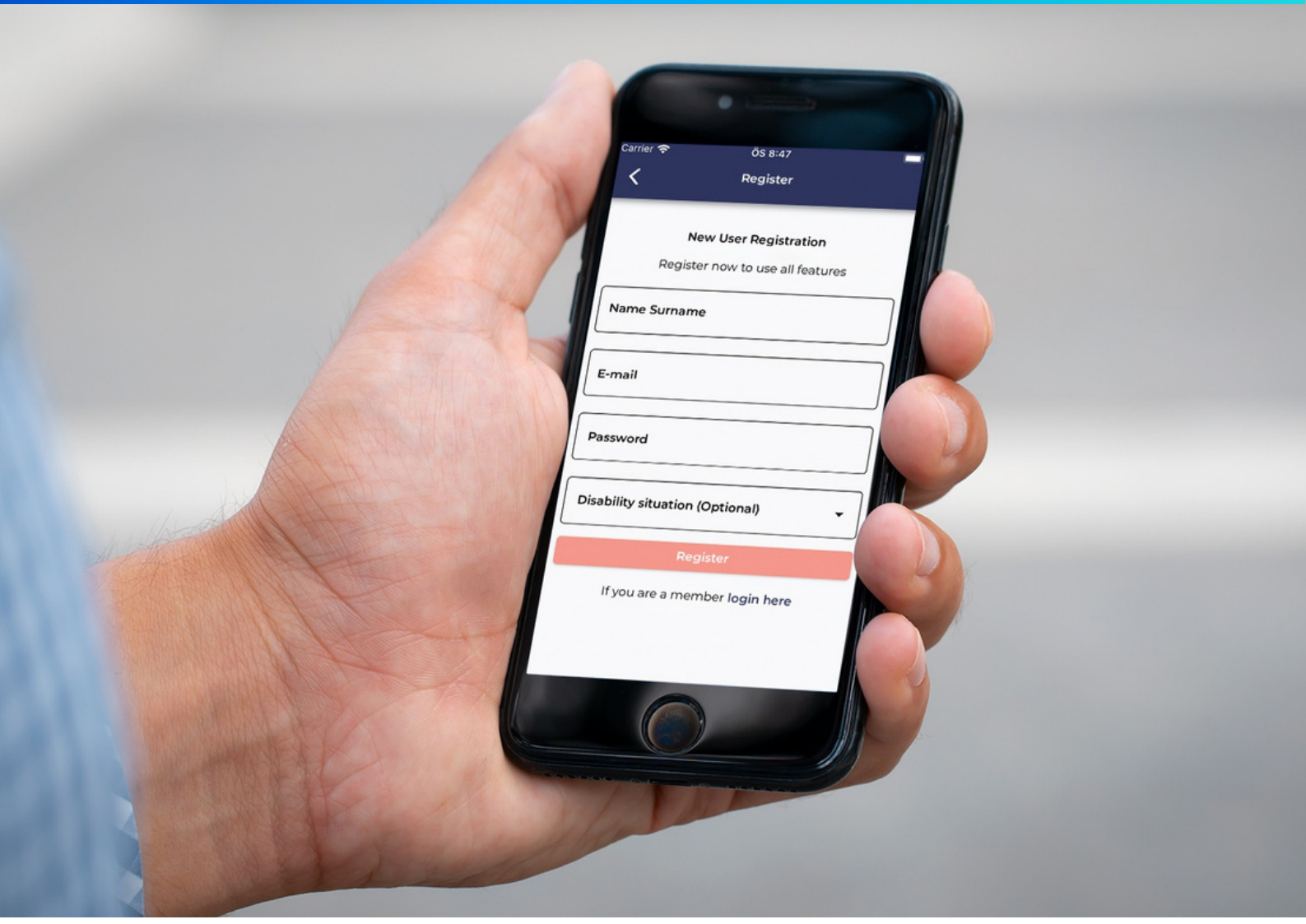
-Name surname

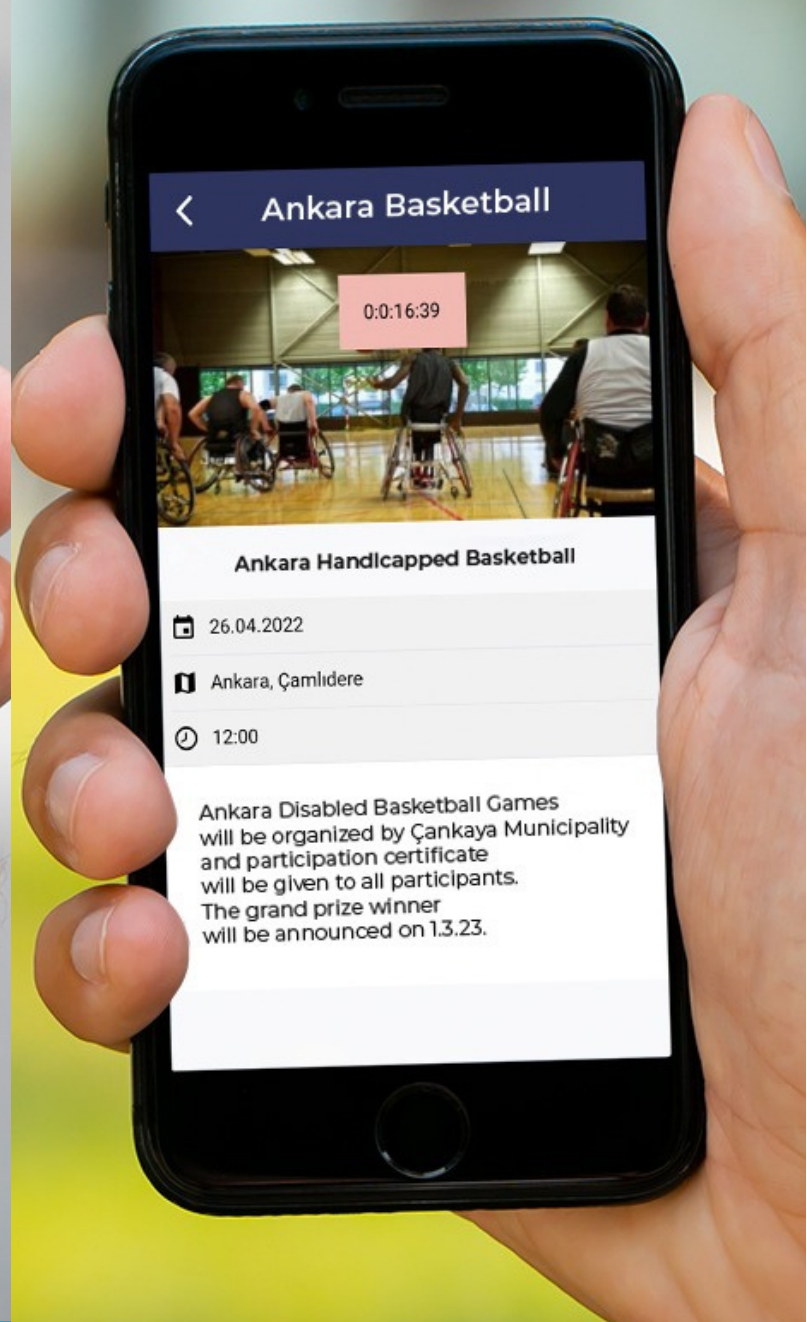
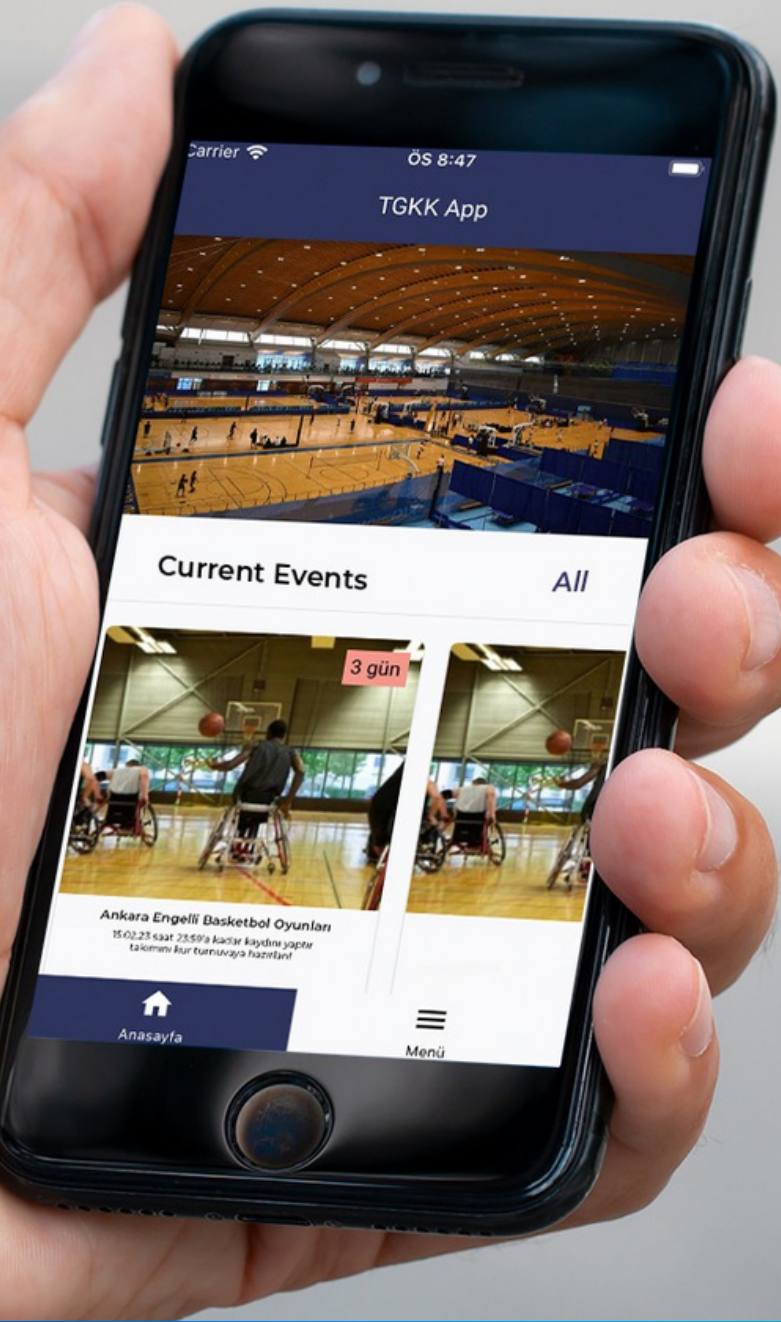
-Email

-Password

-Disability situation

User is created by filling in the information.





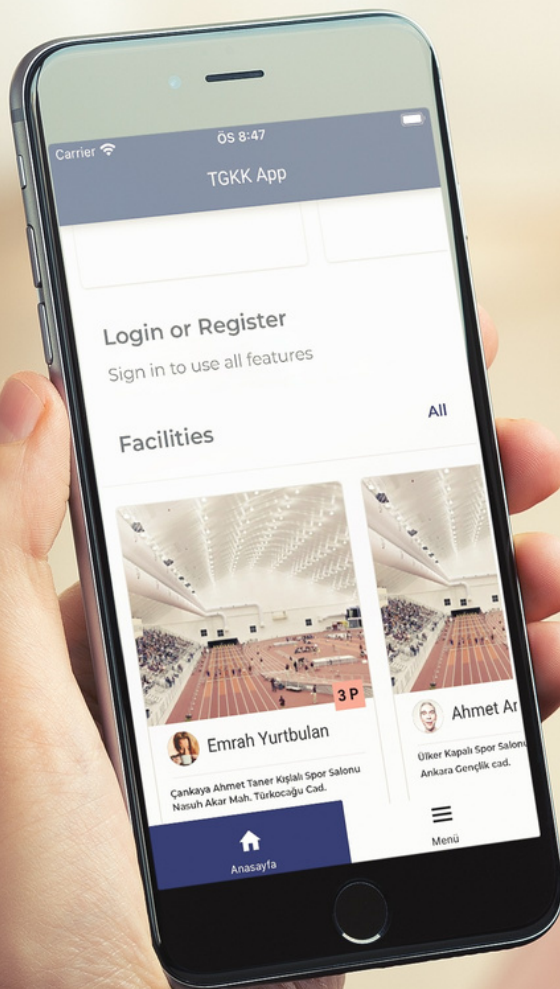
# Events

You can review past events and upcoming events in the Events section. On this screen, the disability status information of the participation and the event is displayed. In addition, there is a lot of information such as the place, time, and by whom the event was held.

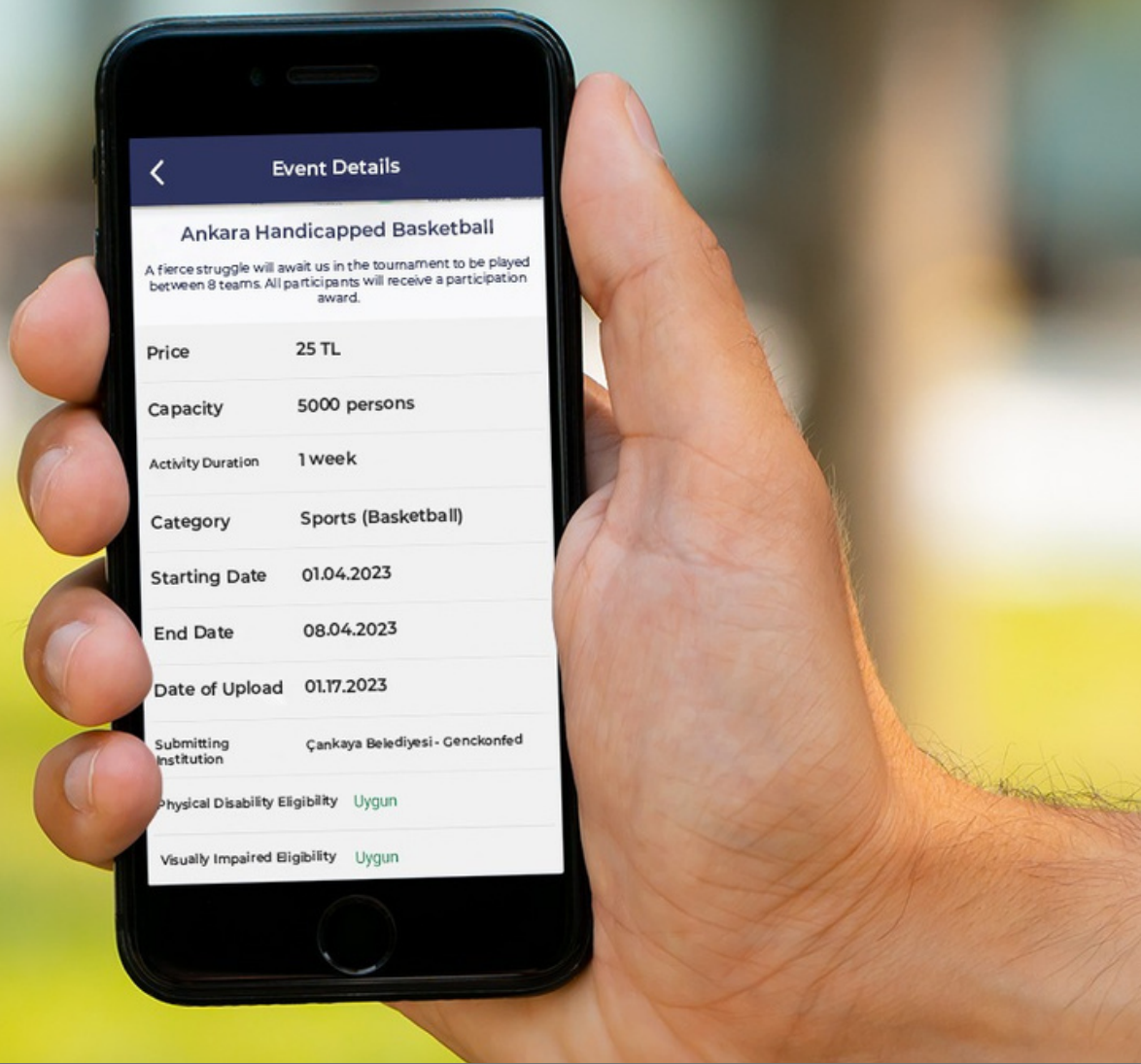
# Sport Facilities

In the application, you can reach all the sport facilities via the map .  
You can examine the basic features of the facilities and their details if you want.

- Facility Name
- Capacity
- Sports facilities
- Instructor status and details
- Eligible criteria for disability







### Disclaimer:

The European Commission's support for the production of this publication does not constitute an endorsement of the contents, which reflect the views only of the authors, and the Commission cannot be held responsible for any use which may be made of the information contained therein.



Erasmus+



KA205 - Strategic Partnerships for Youth  
Building United Society (2019-1-TR01-KA205-073434)



TÜRKİYE  
GENÇLİK KULÜPLERİ  
KONFEDERASYONU

Copyright © 2022